



www.knights.uk.com

Holton Road

TOWN CENTRE

CARDIFF

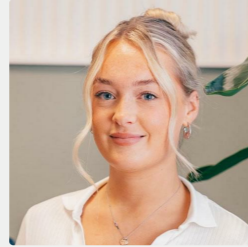
VALE

CAERPHILLY

BRISTOL



Comments by Miss Georgia Farr



Property Specialist
Miss Georgia Farr
Sales Negotiator

georgia@jeffreycrossandknights.co.uk

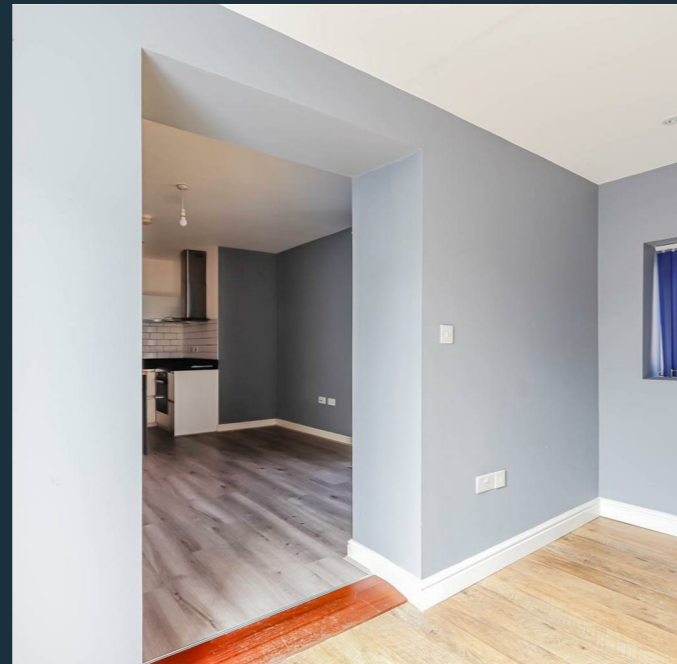
Holton Road, Barry, CF63 4HA



Total Area: 51.5 m² ... 554 ft²

All measurements are approximate and for display purposes only

Comments by the Homeowner





Holton Road

Town Centre, Barry, CF63 4HA

Guide Price

£145,000



2 Bedroom(s)



1 Bathroom(s)



554.00 sq ft



Contact our
Knights Barry Branch

01446 700222

Located in the heart of Barry, this beautifully presented ground-floor flat offers a fantastic blend of modern style and everyday convenience. Spacious and well maintained throughout, the property features two generous reception rooms and two well-proportioned bedrooms, making it an ideal choice for first-time buyers, downsizers, or investors alike.

The apartment boasts a contemporary finish, creating a move-in-ready home that is both stylish and practical. One of the standout features is the private entrance and charming enclosed garden — perfect for relaxing outdoors, entertaining guests, or simply enjoying a peaceful retreat.

Inside, the accommodation is thoughtfully arranged and includes a modern bathroom designed with both comfort and functionality in mind.

Conveniently situated close to local shops, amenities, and public transport links, the property also benefits from nearby green spaces ideal for walks and outdoor leisure.

Offered to the market with no onward chain, this superb home presents an excellent opportunity for buyers seeking a smooth and straightforward move.



LIVING / KITCHEN 13'06" / 18'04" x 13'04" / 10'04" (4.11m / 5.59m x 4.06m / 3.15m)

STUDY 6'03" / 4'01" x 5'05" / 11'10" (1.91m / 1.24m x 1.65m / 3.61m)

BEDROOM ONE 9'08" x 8'09" (2.95m x 2.67m)

BEDROOM TWO 9'09" x 7'06" (2.97m x 2.29m)

STORAGE 3'01" x 9'03" (0.94m x 2.82m)

BATHROOM 9'08" x 5'02" (2.95m x 1.57m)





Energy Efficiency Rating		Current	Potential
Very energy efficient - lower running costs			
(92 plus) A			
(81-91) B			
(69-80) C		74	79
(55-68) D			
(39-54) E			
(21-38) F			
(1-20) G			
Not energy efficient - higher running costs			
England & Wales		EU Directive 2002/91/EC	

